

CERTIFICATE OF LOCATION OF GOVERNMENT CORNER

NORTHEAST Corner of Section 6, Township 106, Range 40, 5TH P.M.

STATE OF MINNESOTA, County of MURRAY

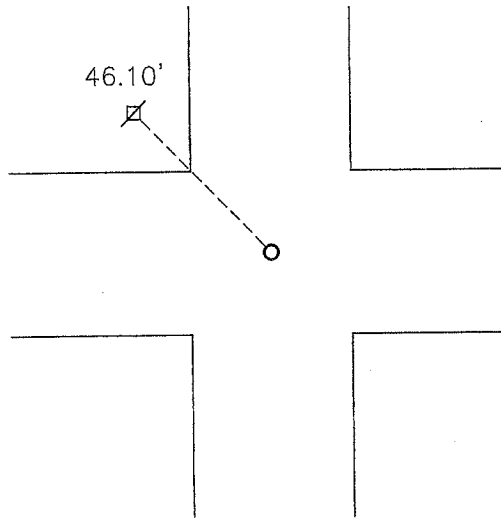
At the corner location shown on the sketch:

On 11-06-2012 found a 3/4" pipe.
DATE

left monument as found, lowered monument, removed monument (explain)

On _____ placed a _____
DATE

SKETCH OF REFERENCE TIES



Minnesota State Plane Coordinate
System Murray County Datum
NAD83 (1996)

N: 163442.380
E: 521899.097

Nail and seal in utility pole NW 46.10'

Statement of evidence relative to this corner location is on back of page.

I hereby certify that this document and the data contained herein was prepared by me or under my direct supervision.

[Signature] 2/22/13
SIGNATURE DATE

Registration No. 43844

- Land Surveyor, Professional Engineer
 County Surveyor, County Engineer

OFFICE OF THE COUNTY RECORDER

County of _____

I hereby certify that this document was filed in the Co. Recorders office at _____ .M on the MAY 23 2013 day of _____ A.D. 20 _____

County Recorder *[Signature]*
By _____, Deputy

DOCUMENT NO. _____

Statement of Evidence

In 1861, J. W. Myers did the original survey of the north line of the township.

On November 2, 1899, J. W. Woolstencroft found a stone at the corner.

(No date) The Murray County Highway Department found a field stone at the corner and set a steel pin above it.

On November 6, 2012, Bueltel-Moseng Land Surveying found a $\frac{3}{4}$ " pipe at the corner.